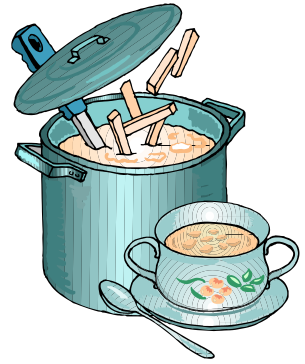
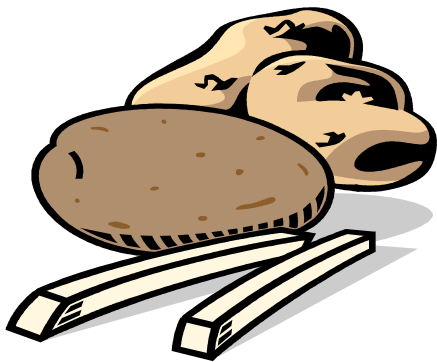




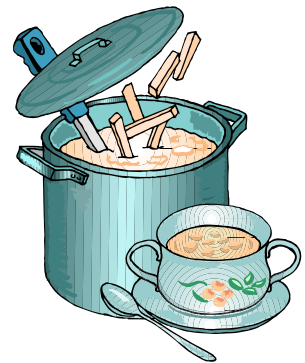
CONFLICT



PLOT



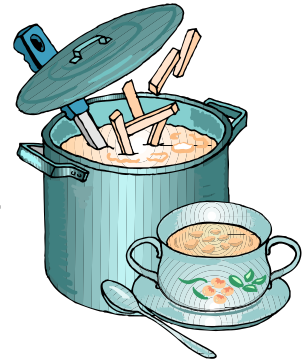
POINT  
OF VIEW





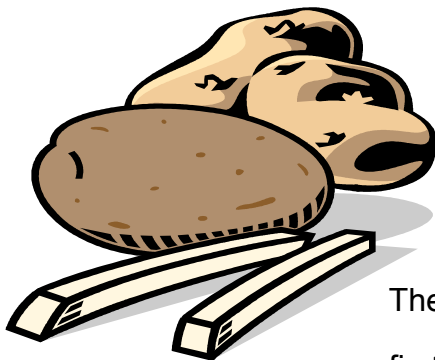
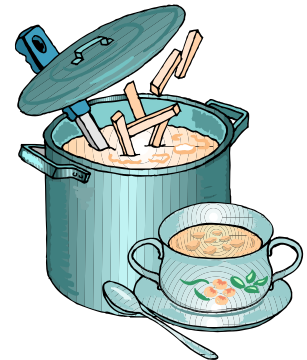
# CONFLICT

The problem the main character faces: man versus man, nature, society, or self.



# PLOT

The action of the story;



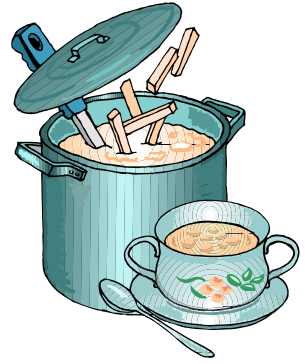
# POINT OF VIEW

The perspective from which the story is told:  
first person (I/me) or third person—a) objective/camera, b) limited, or c) omniscient.

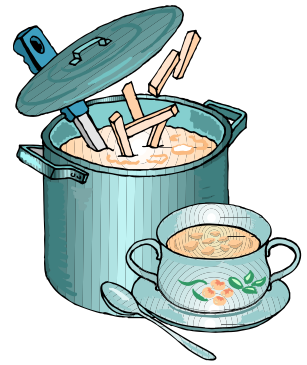




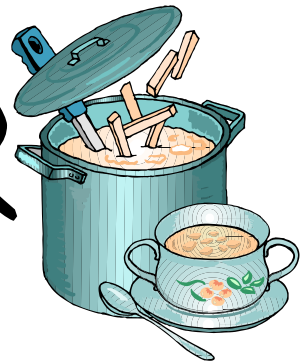
SETTING



THEME



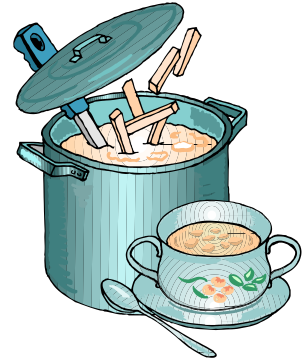
CHARACTER





# SETTING

The time and place.



# THEME

The main message, sometimes a moral, but always an abstract



# CHARACTER

Individuals,  
usually people.

